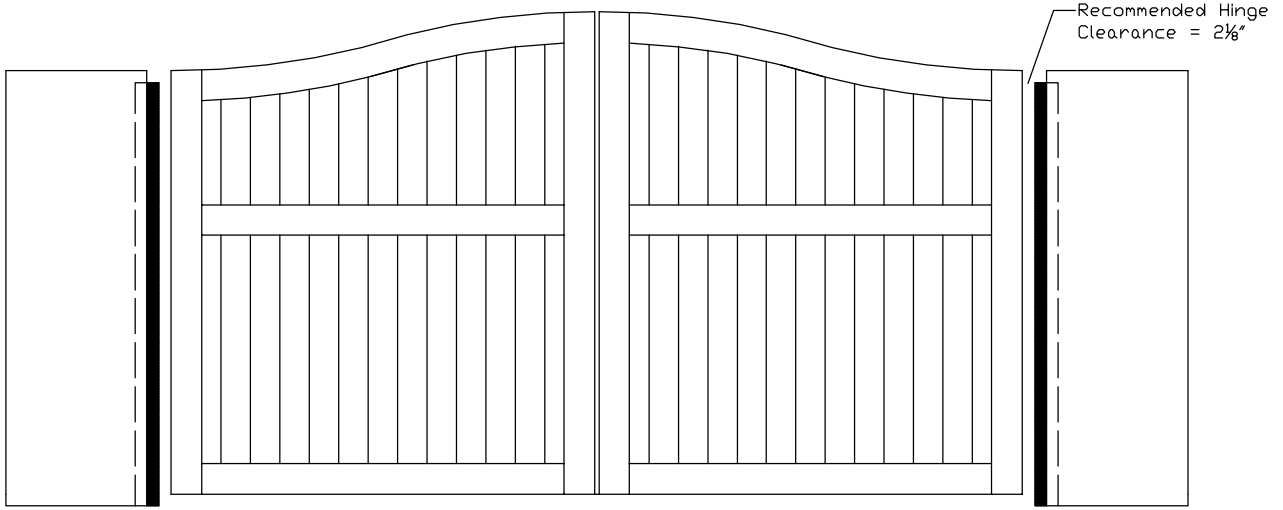
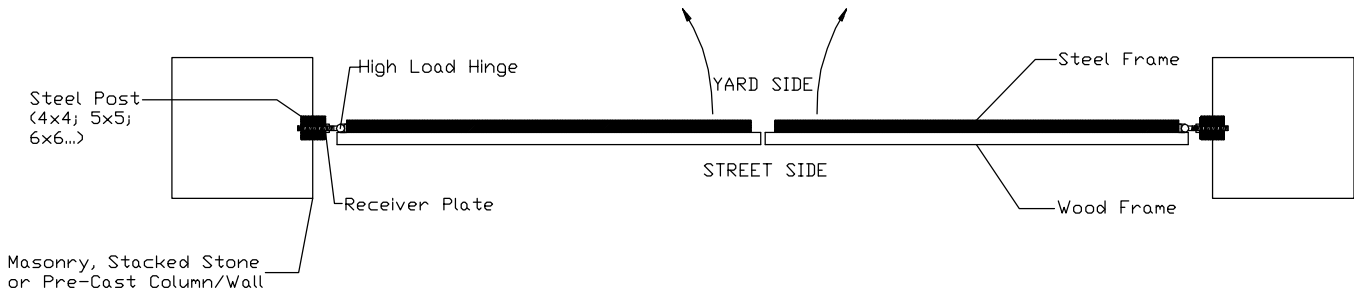
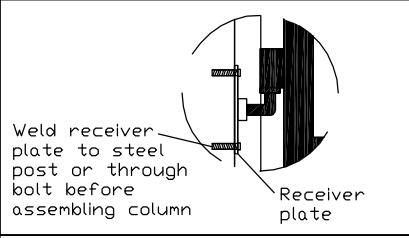
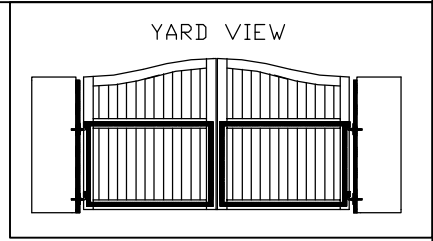


DRIVEWAY GATE WITH STEEL FRAME: ATTACHED TO STEEL POST EMBEDDED IN MASONRY WALL
(with Receiver Plates and High Load Hinges)



2x2 Tubular Steel Frame (over 14' double swing): Yard Swing



2x2 Angle Iron "L" Frame (14' or less double swing): Yard Swing

