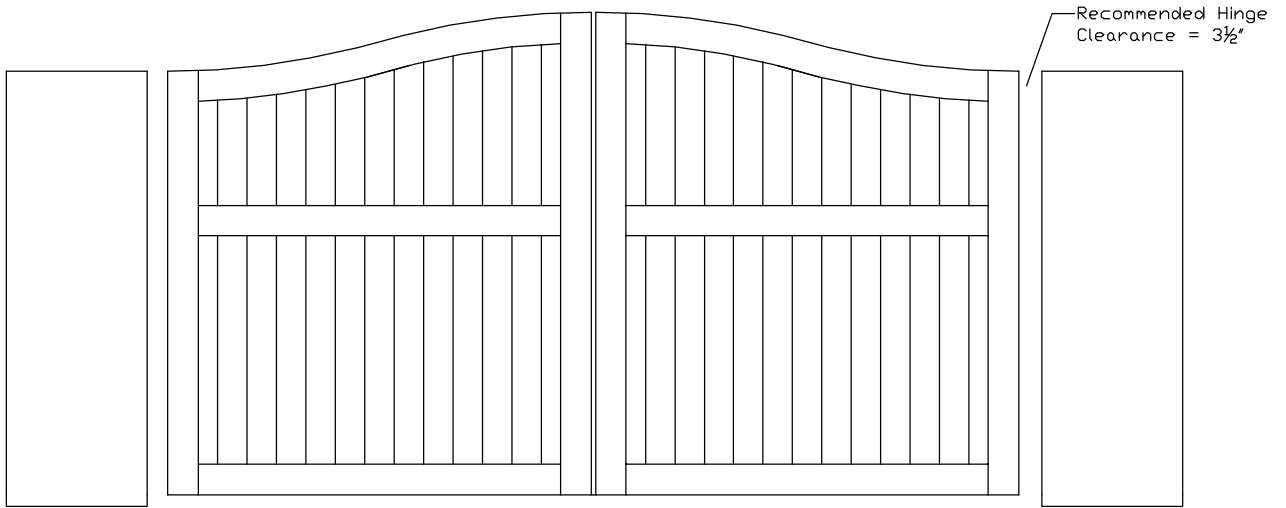
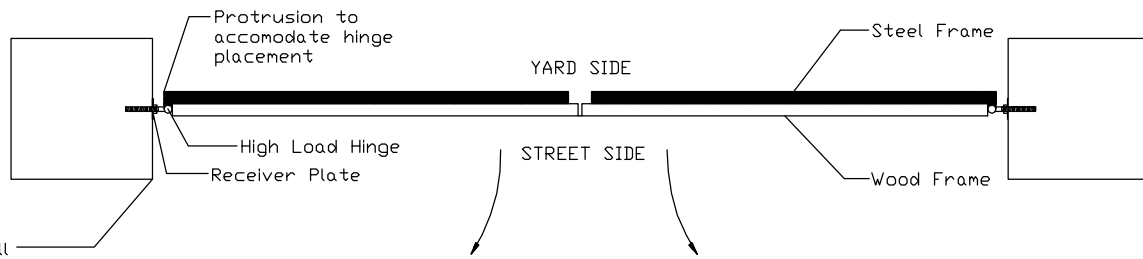
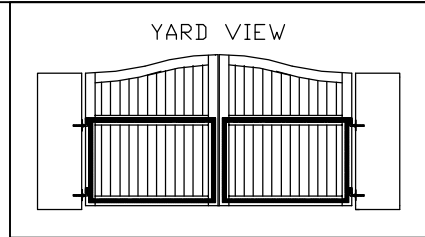
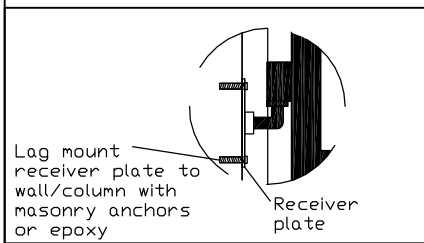


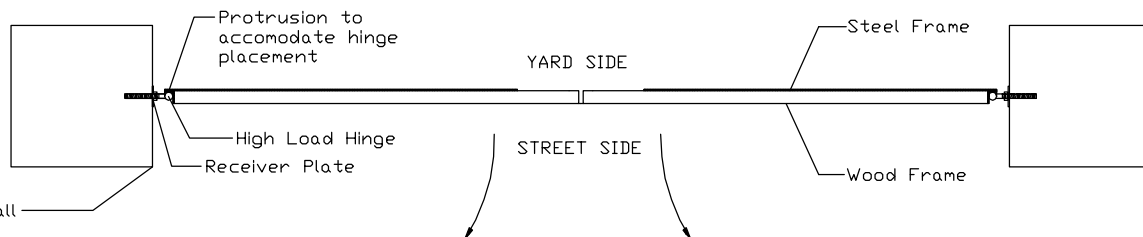
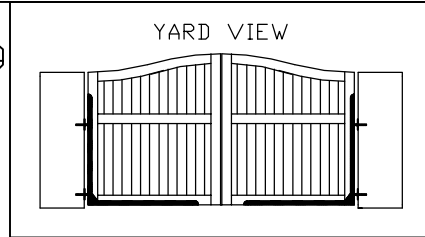
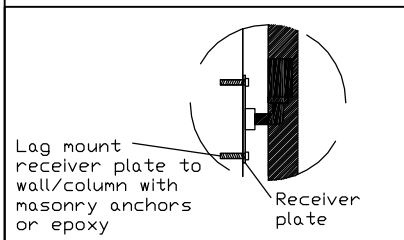
# DRIVEWAY GATE WITH STEEL FRAME: ATTACHED TO MASONRY WALL (with Receiver Plates and High Load Hinges)



## 2x2 Tubular Steel Frame (over 14' double swing): Street Swing



## 2x2 Angle Iron "L" Frame (14' or less double swing): Street Swing



For illustration purposes only. Actual dimensions and materials would be detailed on customer approved documents